

In Car Video

**IVMS-5601**

**IVMS-7001**

---

Operating and installation instructions

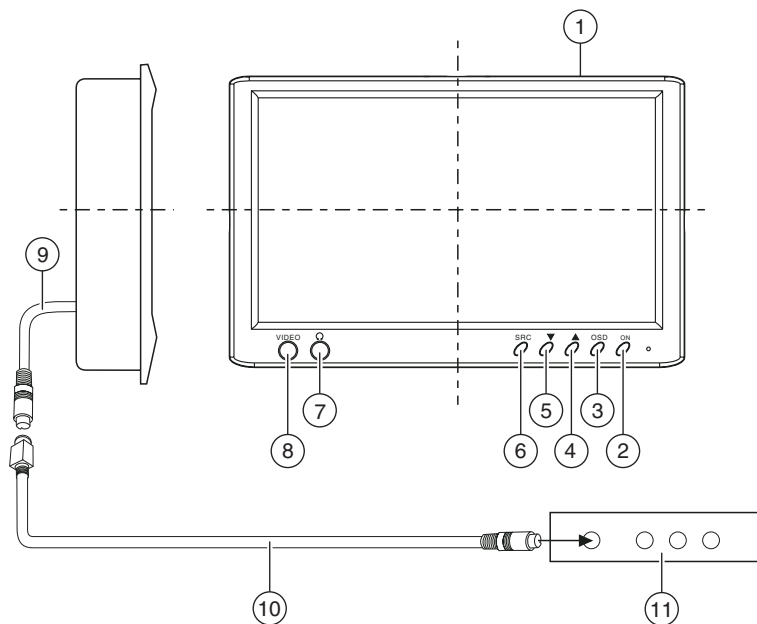


 **BLAUPUNKT**



# DEVICE OVERVIEW

## 5.6" and 7"




- ① 5.6"/ 7" TFT LCD screen for headrests
- ② On/off switch
- ③ Key for screen menu display (OSD menu)
- ④ Up menu
- ⑤ Down menu
- ⑥ AV channel setting (AV1 - AV2 - AV3 - AV4 - AV5)

- ⑦ Headphone socket
- ⑧ Video input (internal)
- ⑨ Connecting cable
- ⑩ Interface cable
- ⑪ AV signal converter unit

<b>Notes / Accessories .....</b>	<b>14</b>
<b>Fitting .....</b>	<b>14</b>
Prepare the working area .....	14
Mark out the dimensions .....	15
Carefully cut open the headrest cover .....	15
Open the headrest and remove filling and other items .....	15
Lay the cable through the headrest .....	16
Insert the mounting frame in the headrest .....	16
Insert the monitor .....	16
Check and adjust the monitor then apply the Velcro strips .....	17
<b>Removal .....</b>	<b>17</b>
<b>OSD functions.....</b>	<b>18</b>
Main menu .....	18
Sub-menu .....	18
<b>Technical data .....</b>	<b>19</b>
<b>Guarantee .....</b>	<b>20</b>

## Important notes

This device is not intended for fitting in the forward section of the passenger compartment where it could also be seen by the driver. Fitting this device in any part of the vehicle where it could interfere with or distract the driver's attention is dangerous and is not permitted. The manufacturer cannot accept responsibility for any damage caused as a result of improper fitting of this device.

 To avoid the risk of electrical shock, the device must be protected from water and moisture, and must not be opened. Dangerously high voltages are generated inside the device.

We wish to point out that the right to claim against warranty is invalidated by any changes or modifications to the device that have not been explicitly approved by the manufacturer.

## Accessories supplied

Connecting cable  
Extraction tool  
Operating instructions

## Fitting

### Note

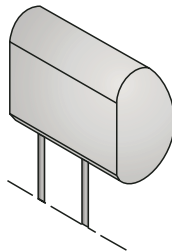
It is recommended that the fitting is carried out at a specialist workshop.

### Prepare the working area

- Remove the headrest, and place it on a working surface that has been cleared and cleaned, where the further assembly procedures may be carried out.

### Note:

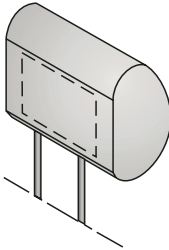
Take appropriate action to ensure that the headrest is not damaged while fitting the monitor.



**Mark out the dimensions**

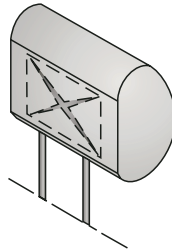
- ⇒ Feel the covering of the headrest carefully to ensure that there are no invisible parts that would prevent the monitor from being fitted.

Use the cardboard template provided to mark out the area that will need to be cut.

**Carefully cut open the headrest cover**

Use a knife with an adjustable cutting depth to cut out the planned area.

- ⇒ Make the first cut inside the marked area at a point about 0.5 cm from one of the corners, then make a diagonal cut to a point about 0.5 cm from the opposite corner.
- ⇒ Make a similar cut between the other two diagonally opposed corners.

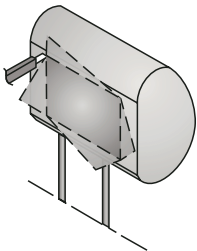
**Open the headrest and remove filling and other items**

- ⇒ Carefully lift the covering material away from the cut area.
- ⇒ Adjust the cutting depth of the knife to about 2.5 cm, and cut into the headrest following a line about 0.5 cm inside the marked edge.
- ⇒ Carefully lift the filling material at one corner, and cut deeper into the material with the knife.
- ⇒ Remove the filling material in small pieces.
- ⇒ As you do this, lift one piece of the filling material, and ensure that the cut is being made to an even depth.

To remove other pieces, use a Dremel saw or another suitable tool.

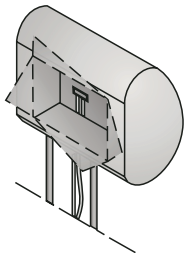
## FITTING/REMOVAL

- ⇒ Insert the monitor to check that it will fit into the cut area, and make adjustments if necessary.



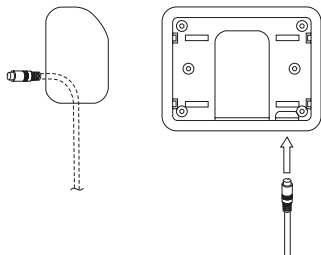
### Lay the cable through the headrest

- ⇒ Now pass the supplied cables through the opening so that they emerge from the underneath of the headrest.
- ⇒ If possible, cover the cable with a cable tunnel.
- ⇒ Now connect the power supply, ground and video signal cables, to check that the monitor is working.



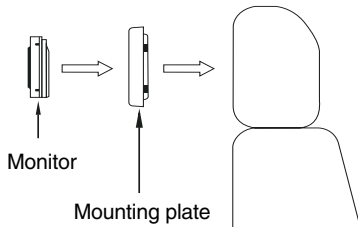
### Insert the mounting frame in the headrest

- ⇒ Before connecting the monitor, pass the connecting cables through the holes provided in the mounting plate, as shown in the illustration.
- ⇒ Insert the mounting plate into the area that has been cut out, and fix it in place with appropriate fastenings.



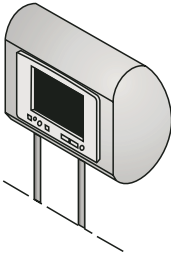
### Inserting the monitor

- ⇒ Before connecting the monitor, pass the connecting cables through the holes provided in the mounting plate, as shown in the illustration.
- ⇒ Insert the monitor into the mounting plate, and attach it with appropriate fastenings.



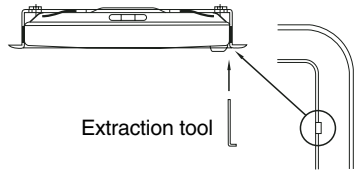
## Check and adjust the monitor then apply the Velcro strips

- ⇒ Connect the monitor, place it temporarily in the cut-out, and place the headrest into position.
- ⇒ Check the various monitor settings such as brightness, headphone function, volume control and so on.
- ⇒ Then attach the Velcro strips to the rear of the monitor, and push the frame onto the headrest. Take care not to press the screen itself, and apply pressure only in the region of the frame.



## Removal

- ⇒ To remove the screen, insert the extraction tool between the screen and the mounting plate.
- ⇒ Insert the extraction tool at the place where a slot has been provided between the screen and the mounting plate.



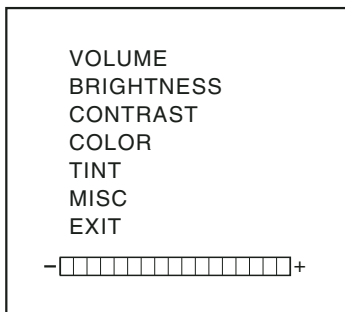
# FUNCTION

---

## OSD functions

### Main menu

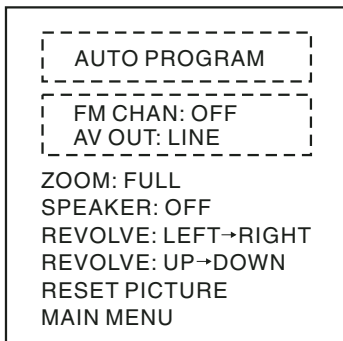
- ⇨ Call up the main menu by pressing the “MODE” key on the main device, or “MENU” on the remote control unit.
- ⇨ Select the “EXIT” option to leave the OSD menu again.



- VOLUME:  
Volume adjustment
- BRIGHTNESS:  
Brightness adjustment
- CONTRAST:  
Contrast adjustment
- COLOR:  
Color adjustment
- TINT:  
Screen tint adjustment
- MISC:  
Opens the sub-menu
- EXIT:  
Leave the OSD menu

### Sub-menu

- ⇨ To reach the following menu options, select “MISC” from the main menu.
- ⇨ When in the sub-menu, select the “MAIN MENU” option to return to the main menu, then select “EXIT” to leave the OSD menu.



### Note:

Rotate UP → DOWN (off function).

- AUTO PROGRAM :  
See the “AUTO PROGRAM” function in the description of the remote control unit.
- AV OUT:  
Use this option to select between the “constant” and “variable” AV output modes.



- **ZOOM :**

This mode is pre-set by default to “full”. You can make the various adjustments for the display mode that you want by pressing the ▲ or ▼ keys for the following options:

Full = display a 4:3 signal in a 16:9 image format

ZOOM1 = picture height, zoom factor = 4/3

WIDTH1 = picture height and different picture width

Normal = edge ratio 4:3

ZOOM2 = zoom factor = 8/7

WIDTH = different picture widths

WIDTH2 = picture height and different picture width

ZOOM3 = picture height, zoom factor = 8/7

- **SPEAKER:**

Choose the “SPEAKER” option, then switch the monitor loudspeaker on or off with the ▲ or ▼ keys.

- **REVOLVE**

With this function and the ▲ and ▼ keys you can revolve the display on the screen.

- **RESET:**

Select the “RESET PICTURE” option to return all the adjusted parameters to their factory pre-set values.

- **MAIN MENU:**

If you are in the sub-menu, select this option to return to the main menu.

## Technical data

System:	NTSC/PAL dual system
Power supply / consumption:	112 V DC ± 10%, <700 mA
Standby:	< 1 mA
Video input level:	Combined video signal 0.7 - 2.0 Vp-p, 75 Ohm
Audio input level:	0 - 0.3 Vrms, 10 - 20 kHz
Operating temperature:	0° C - +60° C
Storage temperature:	-20° C - +70° C
Screen size (diagonal):	5.6", 7"
Contrast ratio:	150
Electrical power consumption:	< 9 W
Brightness:	400 cd/m <sup>2</sup>
Screen technology:	TFT (thin film transistor) display system

## Resolution (pixels):

5.6": 720 (H) x 234 (W) =  
168,480 pixels

7": 1440 (H) x 234 (W)  
= 336,960 pixels

Black light: cold cathode tube

## Visible screen area:

155.52 (W) x  
87.75 (H) mm

## Angle of view:

5.6": from left and right:  
45°,

from above: 10°,  
from below: 30°

7": from left and right:  
60°,

from above: 60°,  
from below: 30°

## Full monitor dimensions:

5.6": 140 (W) x 114 (H) x  
42 (D) mm

7": 200 (W) x 127 (H) x  
33,5 (D) mm

Monitor weight: < 500 g

**Guarantee**

The scope of the guarantee depends on the regulations in force within the country in which the unit was purchased.

If your unit develops a fault, please contact your dealer and present the purchase receipt.

If the statutory guarantee period in your country is less than 12 months, Blaupunkt will grant a 12-month manufacturer's guarantee. This guarantee does not cover damage due to wear, incorrect usage or commercial use.

If you wish to enforce a claim under the manufacturer's guarantee that is provided by Blaupunkt, please send the faulty equipment together with the purchase receipt to the Blaupunkt customer service centre in your country. You can find out which address is closest to you by contacting the telephone hotline listed on the back page of this booklet. Blaupunkt retains the right to rectify defects or supply a replacement.

Subject to changes!

**Service-Nummern / Service numbers / Numéros du service après-vente / Numeri del servizio di assistenza / Servicenummers / Telefonnummer för service / Números de servicio / Números de serviço / Servicenumre**

<b>Country:</b>	<b>Phone:</b>	<b>Fax:</b>	<b>WWW:</b>
Germany	(D) 0180-5000225	05121-49 4002	<a href="http://www.blaupunkt.com">http://www.blaupunkt.com</a>
Austria	(A) 01-610 390	01-610 393 91	
Belgium	(B) 02-525 5454	02-525 5263	
Denmark	(DK) 44 898 360	44-898 644	
Finland	(FIN) 09-435 991	09-435 99236	
France	(F) 01-4010 7007	01-4010 7320	
Great Britain	(GB) 01-89583 8880	01-89583 8394	
Greece	(GR) 0800-550 6550	01-576 9473	
Ireland	(IRL) 01-4149400	01-4598830	
Italy	(I) 02-369 6331	02-369 6464	
Luxembourg	(L) 40 4078	40 2085	
Netherland	(NL) 023-565 6348	023-565 6331	
Norway	(N) 66-817 000	66-817 157	
Portugal	(P) 01-2185 00144	01-2185 11111	
Spain	(E) 902-120234	916-467952	
Sweden	(S) 08-7501500	08-7501810	
Switzerland	(CH) 01-8471644	01-8471650	
Czech. Rep.	(CZ) 02-6130 0441	02-6130 0514	
Hungary	(H) 01-333 9575	01-324 8756	
Poland	(PL) 0800-118922	022-8771260	
Turkey	(TR) 0212-3350677	0212-3460040	
USA	(USA) 800-2662528	708-6817188	
Brasil (Mercosur)	(BR) +55-19 3745 2769	+55-19 3745 2773	
Malaysia (Asia Pacific)	(MAL) +604-6382 474	+604-6413 640	

**Blaupunkt GmbH**

